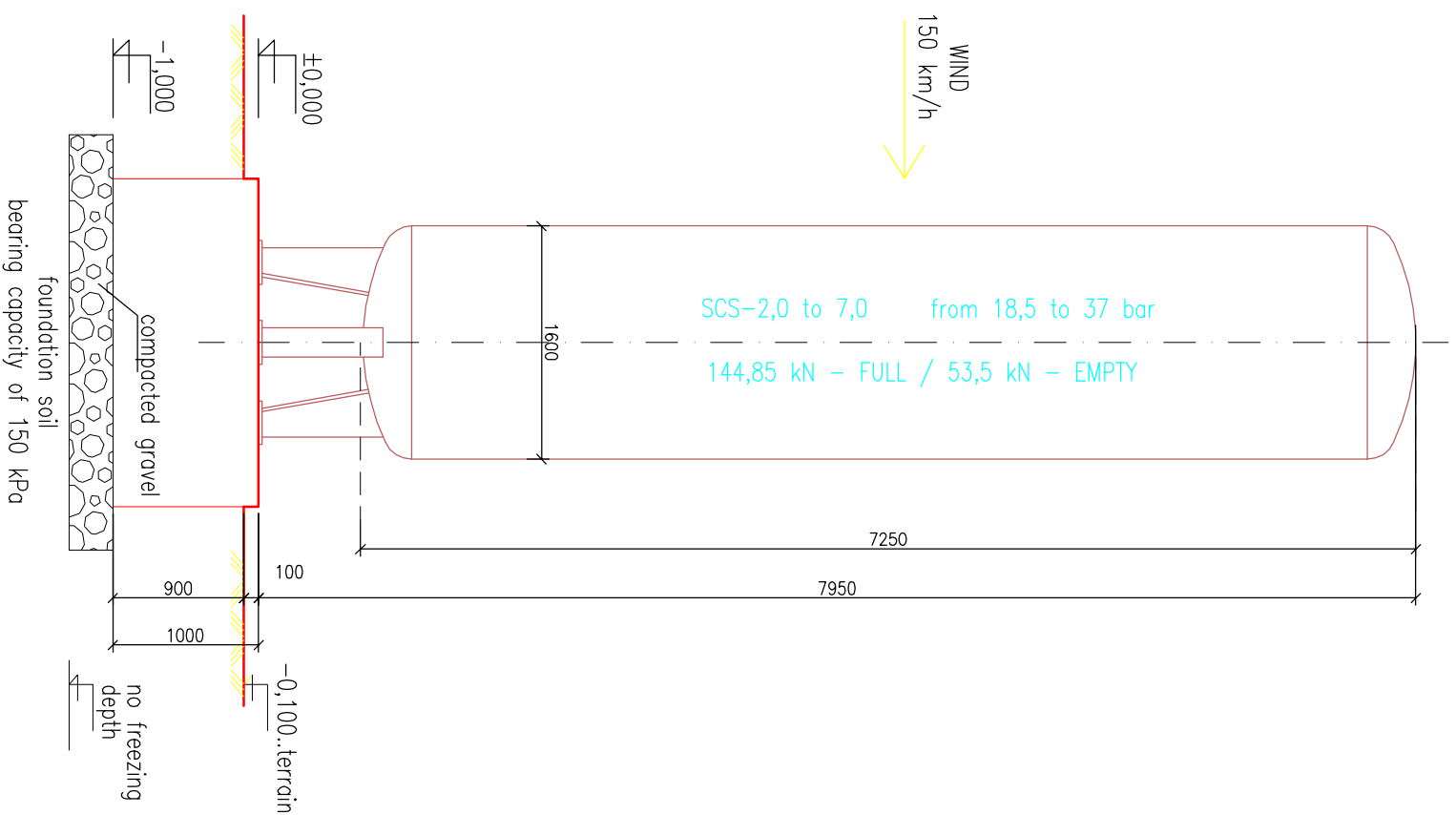
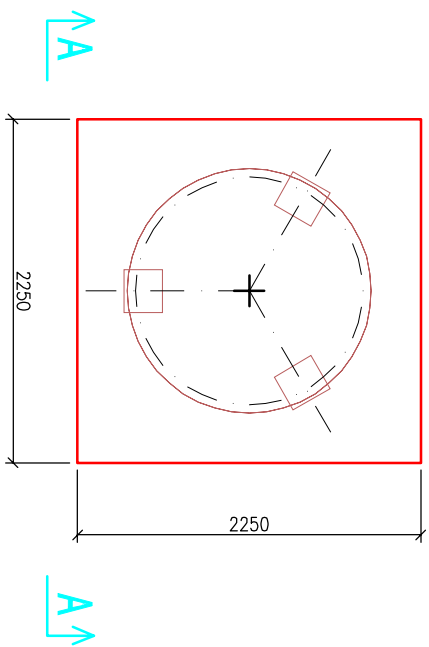


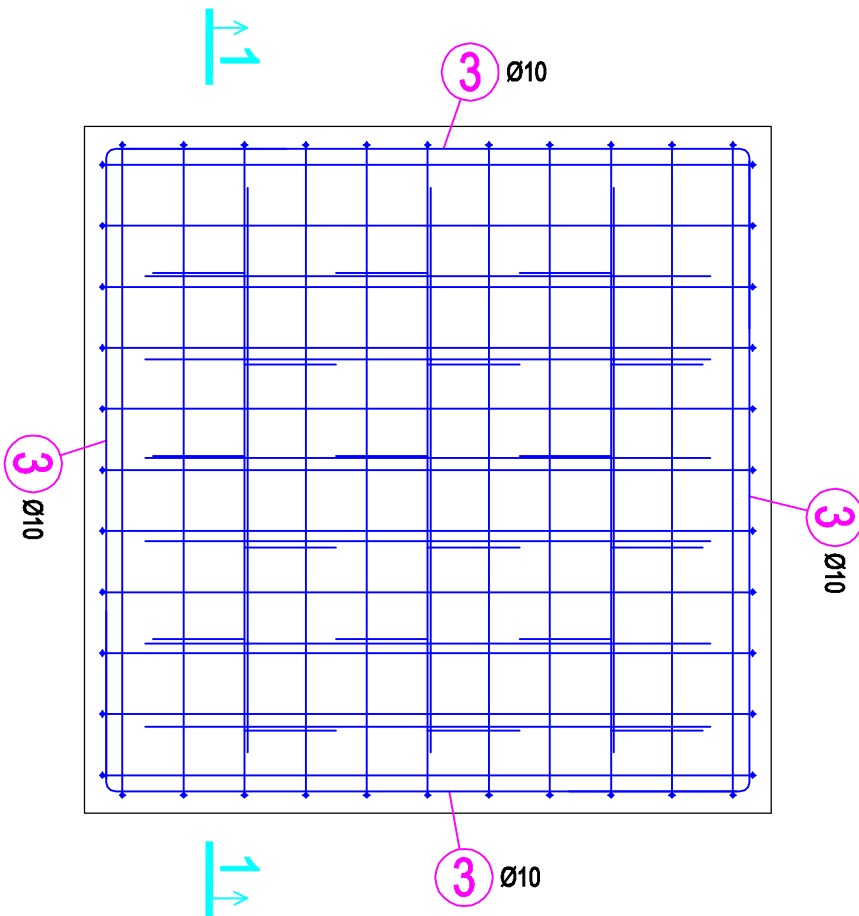
SECTION A-A



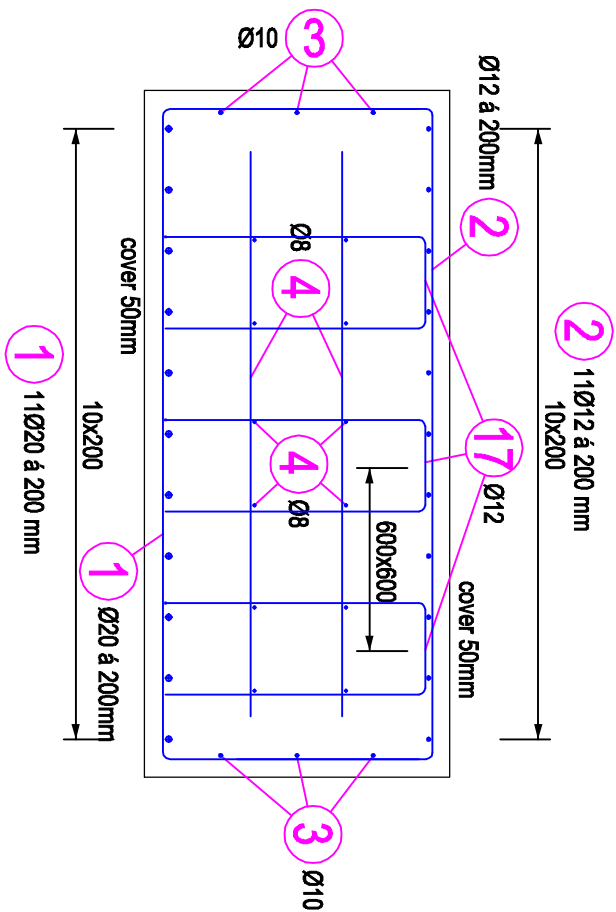
GROUND PLAN



GROUND PLAN



SECTION 1-1



LIST OF REINFORCEMENT

Č. pol.	Počet ks	D [mm]	Tvar	Délka [m]	Spec. hmotnost [kg/m]	Celková délka [m]	Hmotnost [kg]
1	22	R20	840	3.810	2.466	83.820	206.700
2	22	R12	640	3.410	0.888	75.020	66.618
3	12	R10	590	2.655	0.617	31.860	19.658
4	18	R8	1850	1.850	0.395	33.300	13.154
17	9	R12	850	2.600	0.888	23.400	20.779
Hmotnost celkem [kg]							326.908

MATERIAL LEGEND

CONCRETE : C25/30 - XC2, XA1 - C10/4 - Dmax 16 acc. to EN 206-1; f_{ck}/cube = 30 MPa; f_{ctm} = 2,6 MPa
REINFORCEMENT : S500B (EN 1992-1-1); f_{yk} = 500 MPa
CONCRETE COVER: 50 mm

REV./DATE	SIGNATURE	TECHN. CONTR.	Ing. Sobota	PREPARED BY	CHECKED BY	APPROVED BY
	Ing. Šeřtík					
CHECKED BY	Ing. Šeřtík	DIRECTOR	Ing. Růček			
APPROVED BY	Ing. Pokrýščík					
CLIENT:	Taylor-Warton Slovakia, s.r.o. Košice					
PROJECT:						
DATE:	September 2014					
OBJECT:	PRESSURE TANK			ARCHIVAL NUMBER:	RP 423/14/2/AS	
PART:	STATICS			SCALE:	1:50, 1:100	DRAWING NUMB.: 01
DRAWING NAME:	FOUNDATIONS UNDER TANKS SCS-2,0; SCS-2,6; SCS-3,1; SCS-4,8 SCS-5,3; SCS-6,4; SCS-7,0 (from 18,5 to 37 bar)					

All rights to this technical document, exclusively belong to STRONERCO GROUP s.a., company. This technical document can not be copied, reproduced or otherwise provided to third parties without explicit approval of the owner.